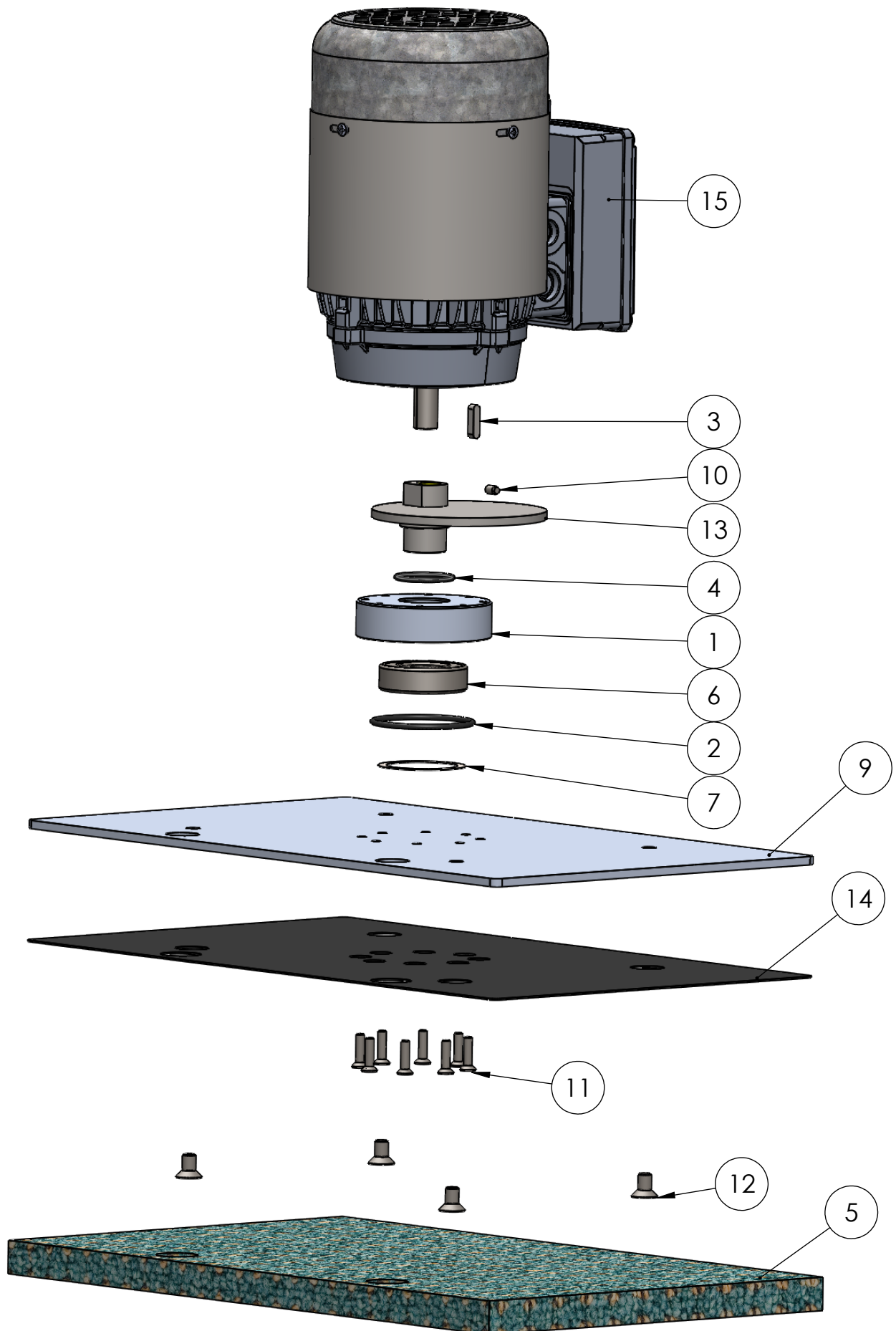


ITEM NO.	EXC. NO.	DESCRIPTION	Description ENG	QTY.
1	SUB	MOTOR+EXCENTRIEK+VOETPLAAT	MOTOR + ECCENTRIC + SCRUB PLATE	1
2	NUMATIC	STEEL NUMATIC	HANDLE NUMATIC	1
3	610005	WIEL Ø200X42 (RES)	WHEEL Ø200X42	2
4	610006	WIELDOP	HUB CUP GREY G48	2
5	650004	TRILRUBBER M8 D=40 L=40	VIBRATION DAMPER M8 40X40	4
6	608011	STERKNOP Ø40 M8	STAR KNOB Ø40 M8	2
7	X10518	T-STUK SLANGTULE Ø6	TEE FOR HOSE Ø6 MALE	1
8	800048	LEIDINGKLEM	TUBE CLAMP Ø7.9-12.7MM	5
9	X10432	90° BOCHT SLANGTULE Ø6	KNEE FOR HOSE Ø6 MALE	3
10	608002	HANDVAT ZWART	U-HANDLES BLACK	1
11	X	C14 WALL SOCKET	C14 WALL SOCKET	1
12	X10572	SINUSRING Ø17XØ8.5	DISC SPRING Ø17XØ8.5	2
13	800144	SLUITRING M6	WASHER M6	2
14	800067	SLUITRING M8 PA	WASHER M8 PA	4
15	800023	SLUITRING M8	WASHER M8	16
16	800049	MOER M8	NUT M8	4
17	800064	IMBUSSCHROEF VK M5X12	COUNTERSUNK HEAD SCREW M5X12	2
18	800111	CARROSSERIERING M5	FENDER WASHER M5	5
19	800070	IMBUSSCHROEF CK M8X20	SOCKET CAP SCREWM8X20	2
20	800041	BOUT ZK M8X12	HEX HEAD BOLT M8X12	8
21	800063	BORGMOER M5	LOCK NUT M5	5
22	800063	BORGMOER M6	LOCK NUT M6	2
23	800022	BORGMOER M8	LOCK NUT M8	8
24	800040	CARROSSERIERING M10	FENDER WASHER M10	2
25	800012	BORGMOER M10	LOCK NUT M10	2
26	801530	BOUT ZK M10X60	HEX BOLT M10X60	2
27	800190	BOUT MET FLENS ZK M06X12	HEX FLANGE BOLT M6X12	8
28	X10811	BOUT MET FLENS ZK M08X50	HEX FLANGE BOLT M8X50	4
29	801531	PASSCHROEF IMBUS M6X12-Ø8	SHOULDER SCREW M6X12-Ø8	2
30	800133	IMBUSSCHROEF BK M5X12	BUTTON HEAD SCREW M5X12	3
31	540044	40/29-45 BF 43sh M8X15/M8i	WAISTED BOBBIN	4
32	X10785	BUMPER 4025	WALL PROTECTION BUMPER 40-25	1
33	800086	TAPEIND Ø12 M8 L=70	DOUBLE THREADED ROD M8 L=67	2
34	X10740	WIELAS Ø17	WHEEL AXLE Ø17	2
35	X10742	TUSSEBUS FRAME NUMATIC	SPACER FOR THE FRAME PLATES	1
36	X10623	HOEKPROFIEL MOTORPLAAT	BRACKET FOR MOTOR PLATE	2
37	X10617	MOTORPLAAT 40-25 (36-230V)	MOTOR MOUNTING PLATE	1
38	X10622	ACHTERPLAAT FRAME	BACK PLATE FRAME	1
39	X10658	ZIJPLAAT BRUG R NUMATIC	SIDE PLATE FRAME (R)	1
40	X10659	ZIJPLAAT BRUG L NUMATIC	SIDE PLATE FRAME (L)	1
41	X10715	MASSABLOK 10 KG 4025	MASS BLOCK 10KG	2
42	210028	SLANG Ø8X1 (1)	HOSE FOR WATER DRIP (1)	2
43	210028	SLANG Ø8X1 (2)	HOSE FOR WATER DRIP (2)	1
44	X	HAAKSE PLUG C13	ANGLE PLUG C13	1
45	205720	PAD VOOR 4025 ROOD	RED PAD 40-25	1
46	X11148	BORGBEUGEL HAAKSESTEKKER	LOCKING PLATE FOR PLUG C13	1
47	210029	SLANGTULE Ø10 MM 1/8" BUI	HOSE PILLAR Ø10MM G1/8" MALE	1
48	X10793	KNIE G1/8" BIN-BIN	KNEE G1/8" 2X FEMALE	1
49	800042	SLANGTULE Ø6 MM 1/8" BUI	HOSE PILLAR Ø6MM - G1/8" FEMALE	1
50	210028	SLANG Ø8X1 (3)	HOSE FOR WATER DRIP (3)	1

MOTOR + EXCENTRIEK + VOETPLAAT

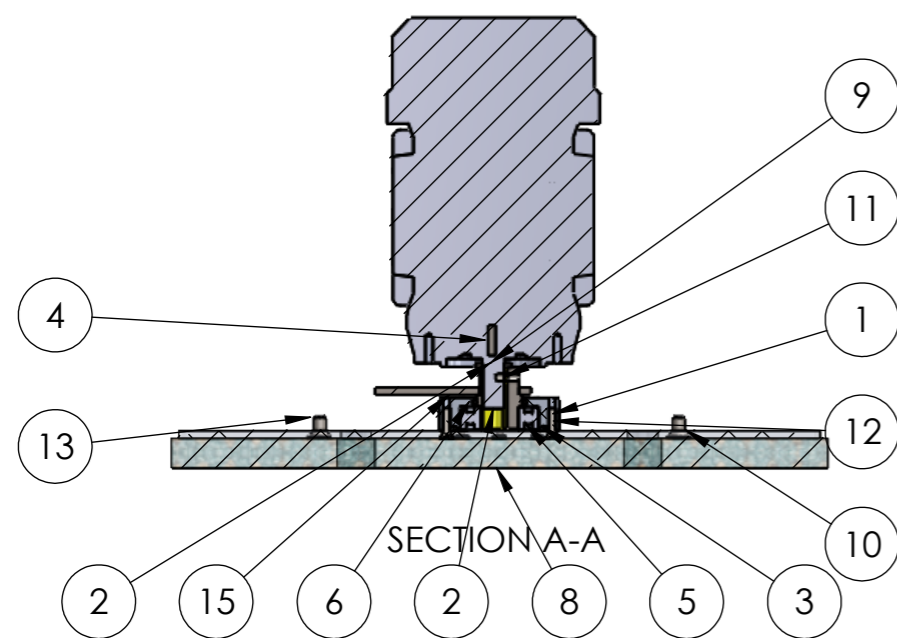
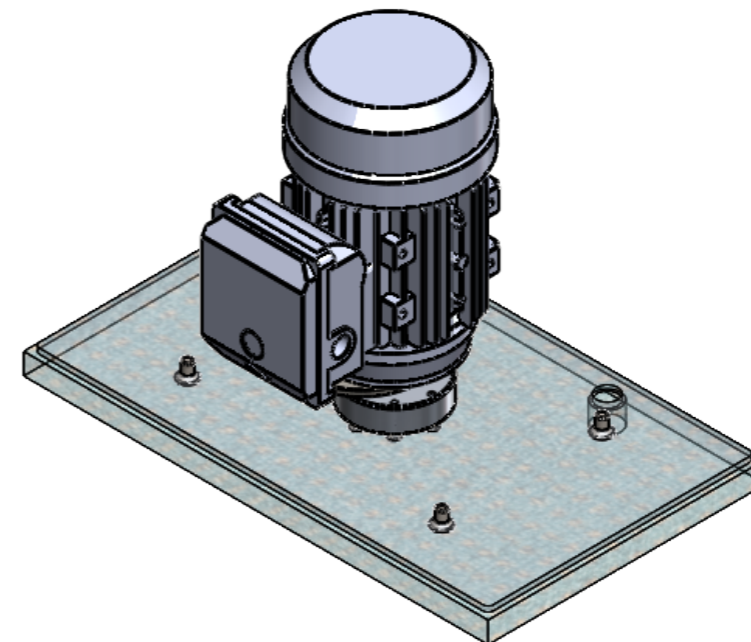
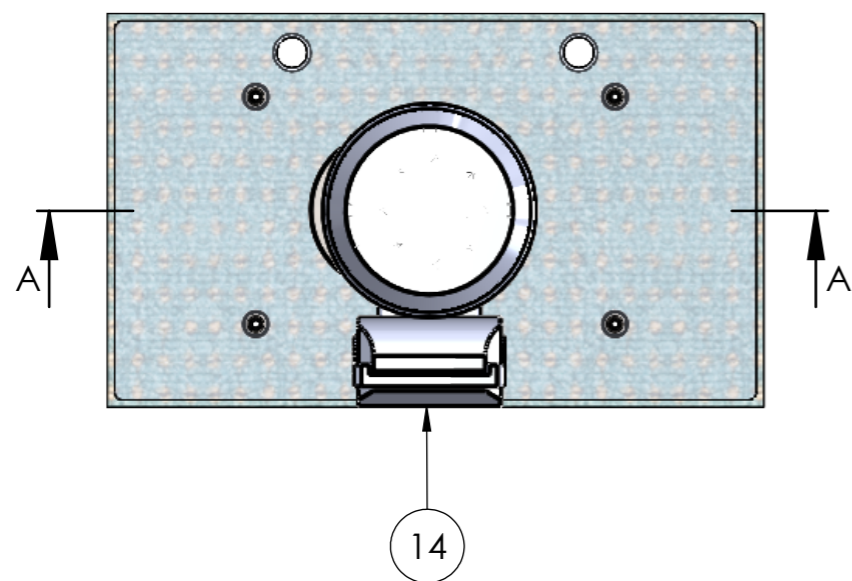


0768 EV - MOTOR + EXCENTRIEK + VOETPLAAT 230VAC R1.1

ITEM NO.	EXC. NO.	DESCRIPTION	Description ENG	QTY.
1	707018	LAGERHUIS KLEINE MACHINES	BEARING HOUSE SMALL	1
2	800054	O-RING NBR ZW 36624 56X3	O-RING Ø56X3	1
3	540011	VLAKKE INLEGSPIE 30X6X6	AXLE KEY 30X6X6	1
4	800056	O-RING NBR ZW 36624 30X3	O-RING Ø30X3	1
5	205720	PAD VOOR 4025 ROOD	RED PAD 40-25	1
6	801514	KOGELLAGER	GROOVE BALL BEARING	1
7	801515	GOLFRING 52X42X0.5	WAVE SPRING WASHER Ø52	1
8	705038	RING Ø24X14X3	WASHER Ø25X14X3	1
9	X10618	VOETPLAAT 42-25	FOOD PLATE 40-25	1
10	800104	STELSCHROEF M6X8	SOCKET SET SCREW M6X8	1
11	800183	IMBUSSCHROEF VK M5X20	COUNTERSUNK HEAD SCREW M5X20	8
12	800053	IMBUSSCHROEF VK M8X14	COUNTERSUNK HEAD SCREW M8X14	4
13	902012	EXCENTRIEK 4025 GELAST	ECCENTRIC 40-25 WELDED	1
14	X10618	PADHOUDER 4225	PAD FIXATION TAPE	1
15	540041	MOTOR 0.55KW 230VAC	MOTOR 0.55KW 230VAC	1

8 7 6 5 4 3 2 1

F
E
D
C
B
A

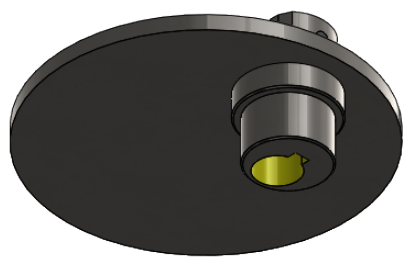
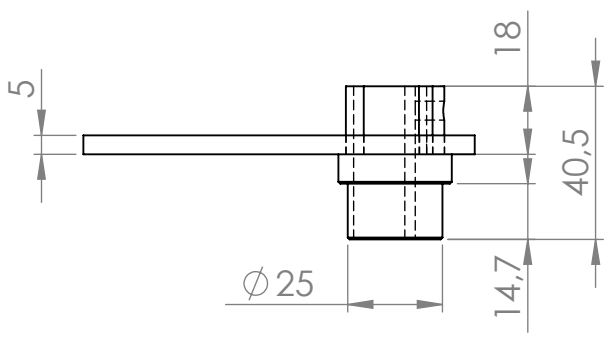
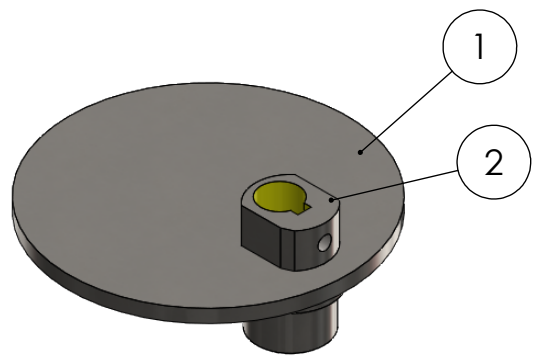
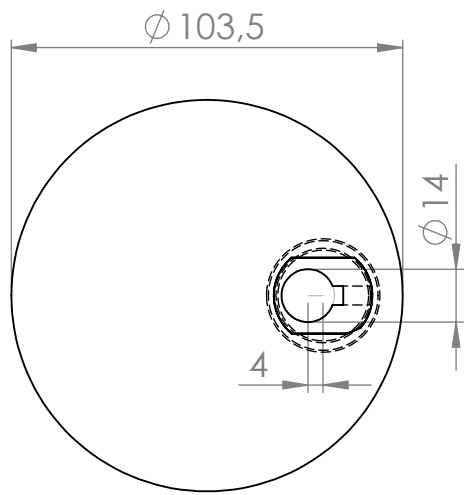


POS	Rev	PART NUMBER	DESCRIPTION	Material	EXC. NO.	QTY
1	1.2	0150-pol	LAGERHUIS KLEINE MACHINES	ALU	707018	1
2	1.0	0767	MOTOR 0.55 KW	INDUMEX	540041	1
3	1.0	0145-pol	O-RING NBR ZW 36624 56X3	NBR 70	800054	1
4	1.0	0152-pol	VLAKKE INLEGSPIE 30X6X6	A5	540011	1
5	1.0	DIN 625 - 6205	KOGELLAGER	INA	801514	1
6	1.0	0187-pol	O-RING NBR ZW 36624 30X3	NBR 70	800056	1
7	1.0	GLF 6205 K2	GOLFRING 52X42X0.5	STAAL	801515	1
8	1.0	0849	PAD VOOR BUDGET	ROOD	X	1
9	1.1	0153-pol	RING Ø24X14X3	RVS 304	705038	1
10	1.0	0771	VOETPLAAT 42-25	ALU	X10618	1
11	1.0	0154-pol	STELSCHROEF M6X8	A2	800094	1
12	1.0	DIN 7991-M05X20	IMBUSSCHROEF VK M5X20	A2	800103	8
13	1.0	DIN 7991-M08X14	IMBUSSCHROEF VK M8X14	A2	800096	4
15	1.0	0897	EXCENTRIEK 4025 GELAST	WELD ASS	X	1

UNLESS OTHERWISE SPECIFIED: DIMENSIONS ARE IN MILLIMETERS SURFACE FINISH: TOLERANCES: LINEAR: ANGULAR:			FINISH:	DEBURR AND BREAK SHARP EDGES	DO NOT SCALE DRAWING	REVISION 1.1
						AANTAL: 1X
DRAWN Rene				SIGNATURE	DATE 21-02-2019	TITLE: MOTOR+EXCENTRIEK+VOETPLAAT ASSEMBLY
CHK'D						
APPV'D						
MFG						
Q.A				MATERIAL: ASS	DWG NO. 0768	A3
WEIGHT:					SCALE:1:5	SHEET 1 OF 1

8 7 6 5 4 3 2 1

F
E
D
C
B
A



ITEM NO.	EXC. NO.	PART NUMBER	DESCRIPTION	Material	QTY.
1	X10624	0858	CONTRAPLAAT 4225	RVS 304	1
2	707022	0281-pol	EXCENTRIEKKERN 3020 +	RVS 304	1

UNLESS OTHERWISE SPECIFIED:
 DIMENSIONS ARE IN MILLIMETERS
 SURFACE FINISH:
 TOLERANCES:
 LINEAR:
 ANGULAR:

FINISH:

DEBURR AND BREAK SHARP EDGES

DO NOT SCALE DRAWING

REVISION 1.0

AANTAL: 1X

NAME	SIGNATURE	DATE
DRAWN: Rene		27-03-2019
CHKD:		
APPV'D:		
MFG:		
Q.A:		

TITLE:
EXCENTRIEK 4025 GELAST WELD ASSEMBLY

MATERIAL:
 WELD ASS

DWG NO.
0897

SCALE: 1:2

WEIGHT: 430.94

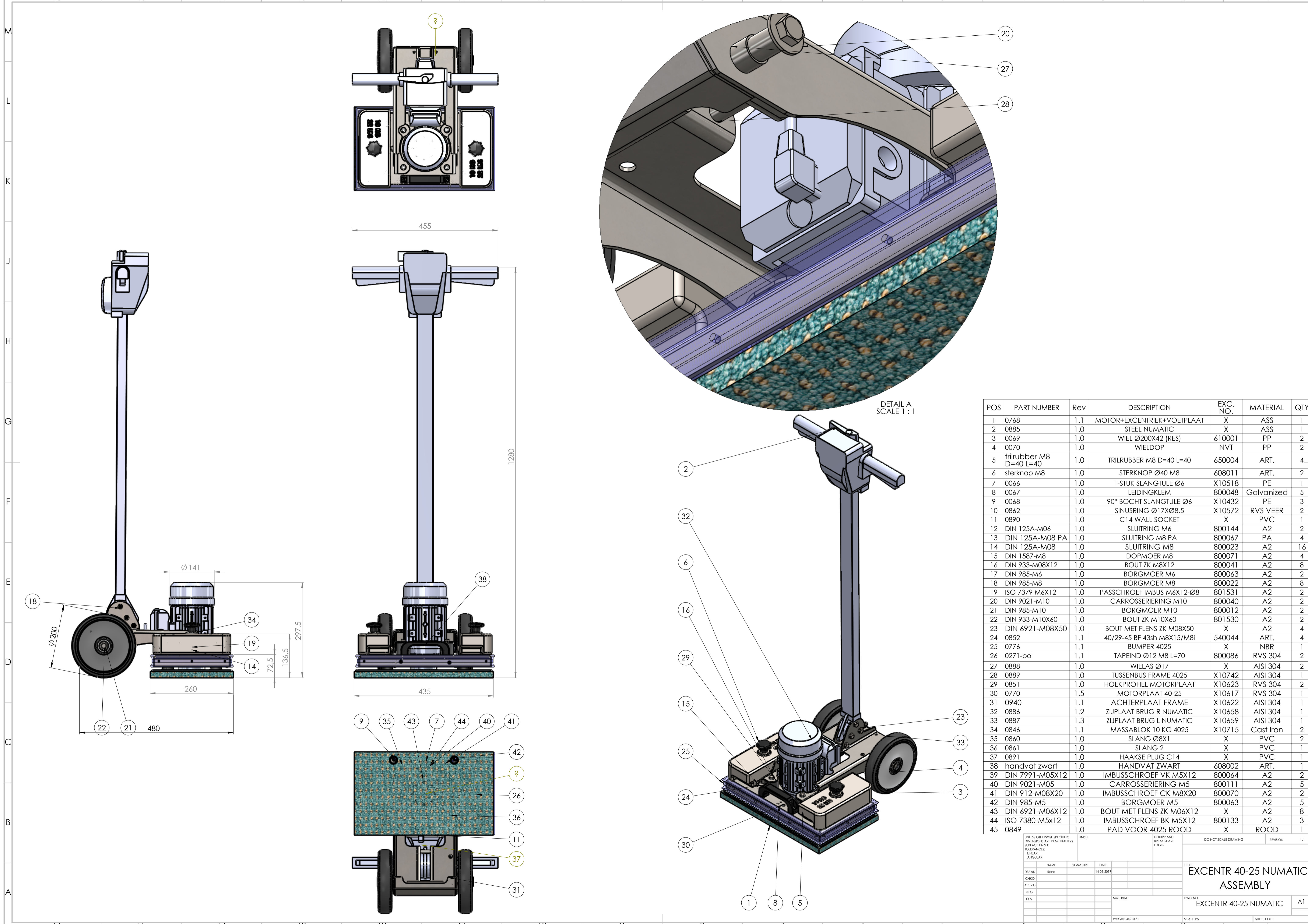
SHEET 1 OF 1

F
E
D
C
B
A

F
E
D
C
B
A

4 3 2 1

4 3 2 1



POS	PART NUMBER	Rev	DESCRIPTION	EXC. NO.	MATERIAL	QTY
1	0768	1.1	MOTOR+EXCENTRIEK+VOETPLAAT	X	ASS	1
2	0885	1.0	STEEL NUMATIC	X	ASS	1
3	0069	1.0	WIEL Ø200X42 (RES)	610001	PP	2
4	0070	1.0	WIELDOP	NVT	PP	2
5	trilrubber M8 D=40 L=40	1.0	TRILRUBBER M8 D=40 L=40	650004	ART.	4
6	sterknop M8	1.0	STERKNOP Ø40 M8	608011	ART.	2
7	0066	1.0	T-STUK SLANGTULE Ø6	X10518	PE	1
8	0067	1.0	LEIDINGKLEM	800048	Galvanized	5
9	0068	1.0	90° BOCHT SLANGTULE Ø6	X10432	PE	3
10	0862	1.0	SINUSRING Ø17XØ8.5	X10572	RVS VEER	2
11	0890	1.0	C14 WALL SOCKET	X	PVC	1
12	DIN 125A-M06	1.0	SLUITRING M6	800144	A2	2
13	DIN 125A-M08 PA	1.0	SLUITRING M8 PA	800067	PA	4
14	DIN 125A-M08	1.0	SLUITRING M8	800023	A2	16
15	DIN 1587-M8	1.0	DOPMOER M8	800071	A2	4
16	DIN 933-M08X12	1.0	BOUT ZK M8X12	800041	A2	8
17	DIN 985-M6	1.0	BORGMOER M6	800063	A2	2
18	DIN 985-M8	1.0	BORGMOER M8	800022	A2	8
19	ISO 7379 M6X12	1.0	PASSCHROEF IMBUS M6X12-Ø8	801531	A2	2
20	DIN 9021-M10	1.0	CARROSSIERING M10	800040	A2	2
21	DIN 985-M10	1.0	BORGMOER M10	800012	A2	2
22	DIN 933-M10X60	1.0	BOUT ZK M10X60	801530	A2	2
23	DIN 6921-M08X50	1.0	BOUT MET FLENS ZK M08X50	X	A2	4
24	0852	1.1	40/29-45 BF 43sh M8X15/M8i	540044	ART.	4
25	0776	1.1	BUMPER 4025	X	NBR	1
26	0271-pol	1.1	TAPEIND Ø12 M8 L=70	800086	RVS 304	2
27	0888	1.0	WIELAS Ø17	X	AISI 304	2
28	0889	1.0	TUSSENBUS FRAME 4025	X10742	AISI 304	1
29	0851	1.0	HOEKPROFIEL MOTORPLAAT	X10623	RVS 304	2
30	0770	1.5	MOTORPLAAT 40-25	X10617	RVS 304	1
31	0940	1.1	ACHTERPLAAT FRAME	X10622	AISI 304	1
32	0886	1.2	ZIJPLAAT BRUG R NUMATIC	X10658	AISI 304	1
33	0887	1.3	ZIJPLAAT BRUG L NUMATIC	X10659	AISI 304	1
34	0846	1.1	MASSABLOK 10 KG 4025	X10715	Cast Iron	2
35	0860	1.0	SLANG Ø8X1	X	PVC	2
36	0861	1.0	SLANG 2	X	PVC	1
37	0891	1.0	HAakse PLUG C14	X	PVC	1
38	handvat zwart	1.0	HANDVAT ZWART	608002	ART.	1
39	DIN 7991-M05X12	1.0	IMBUSSCHROEF VK M5X12	800064	A2	2
40	DIN 9021-M05	1.0	CARROSSIERING M5	800111	A2	5
41	DIN 912-M08X20	1.0	IMBUSSCHROEF CK M8X20	800070	A2	2
42	DIN 985-M5	1.0	BORGMOER M5	800063	A2	5
43	DIN 6921-M06X12	1.0	BOUT MET FLENS ZK M06X12	X	A2	8
44	ISO 7380-M5X12	1.0	IMBUSSCHROEF BK M5X12	800133	A2	3
45	0849	1.0	PAD VOOR 4025 ROOD	X	ROOD	1

UNLESS OTHERWISE SPECIFIED DIMENSIONS ARE IN MILLIMETERS SURFACE FINISH: TOLERANCES: LINEAR: ANGULAR:

DEBURR AND BREAK SHARP EDGES

DO NOT SCALE DRAWING REVISION 1.1

DRAWN	NAME	SIGNATURE	DATE		
CHEK			14-03-2019		
APPRV					
MFG					
G.A.					

TITLE: EXCENTR 40-25 NUMATIC ASSEMBLY

DWG NO: EXCENTR 40-25 NUMATIC A1

WEIGHT: 44210.31 SCALE: 1:5 SHEET 1 OF 1